

# DK1

## 5-Piece Optical Diffuser Kit

The Luxium™ DK1 Optical Diffuser Kit is a set of 5 different filters that are used to adjust the beam angle of Luxium lights. This is an excellent option for creating a smooth and uniform beam. These filters are easy to install on the front of the housing and are held in place by the bezel ring. Used for applications that require a beam that spreads out over a wider angle than the standard narrow beam spot light. Available to fit each of the different product families: ZOBO, ZIGI, ZIBA and TRIUMPH



### KEY FEATURES

- High-efficiency micro-lenses in optically clear materials
- Superb angle control, beam smoothing and color mixing
- Snaps into front bezel for quick set-up of desired beam diffusion angle

### INSTALLATION

- Select desired diffuser pattern based on number of dots at the edge of the diffuser
- Insert diffuser film under tabs around lamp bezel
- Use slight pressure to gently bend diffuser film
- Snap into place



### CHARACTERISTICS

Diffuser Lens	None	no dot	1 dot	2 dot	3 dot	Elliptical	
Beam Shape	SP Spot Light	NFL Narrow Flood	FL Regular Flood	WFL Wide Flood	BFL Broad Flood	Elliptical A	Elliptical B
Beam Angle	19	24	29	47	25	21	33
Field Angle	37	46	59	85	50	46	58

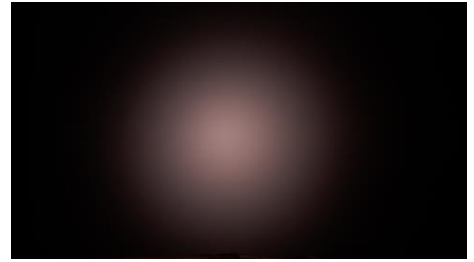
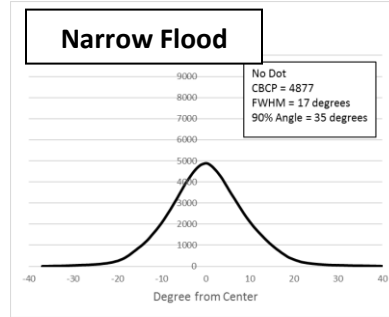
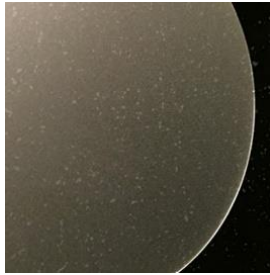
Beam angle measured at Full Width Half Max. Field angle measured at 10% of max center beam power

Install diffusers to create desired effects.

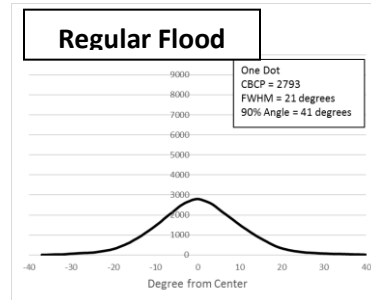
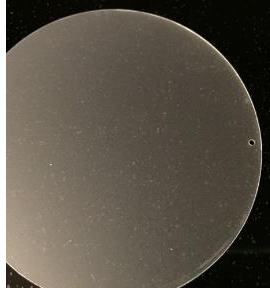
Each Diffuser has a different hole pattern indicator.

The graphs and photos below show diffuser pattern with the ZR30 lamp.

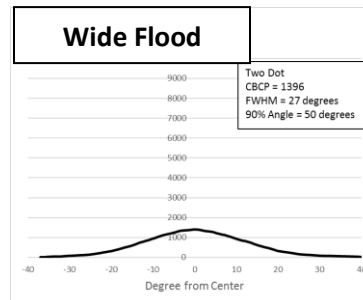
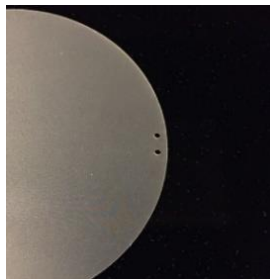
Diffuser #1



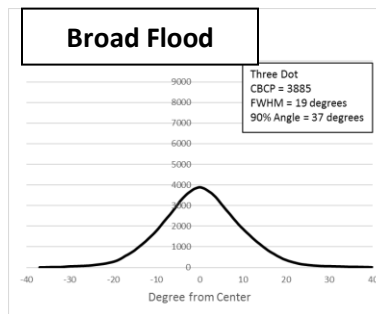
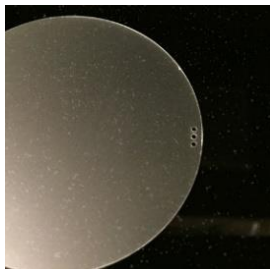
Diffuser #2



Diffuser #3



Diffuser #4



Diffuser #5



**Ellipse**

The elliptical diffuser has two opposing indicator dots.  
The ellipse ratio is 2 to 1.